

# SOME PUBS TO VISIT

## Pubs to the South-ish



The closest pub to the festival is **Charters (1)**, a converted Dutch grain barge on the River Nene at the side of Town Bridge. Make sure you choose the correct side of the bridge or you will be entering a Chinese restaurant that doesn't sell real ale. More confusing is that Charters also has an excellent Oriental restaurant, East, on the upper deck. Expect to find a dozen hand pumps with beers from Oakham Ales and selection of ales from micros far and wide. Charters has a marquee (not as big as ours) and a large beer garden.

If you continue south over the town bridge and take the right hand road you are in Oundle Rd. The first pub you will encounter on the right hand side after you go under the railway bridge will be the **Cherry Tree (2)**, where you will find good real ale and good home-cooked food. A beer garden is available.

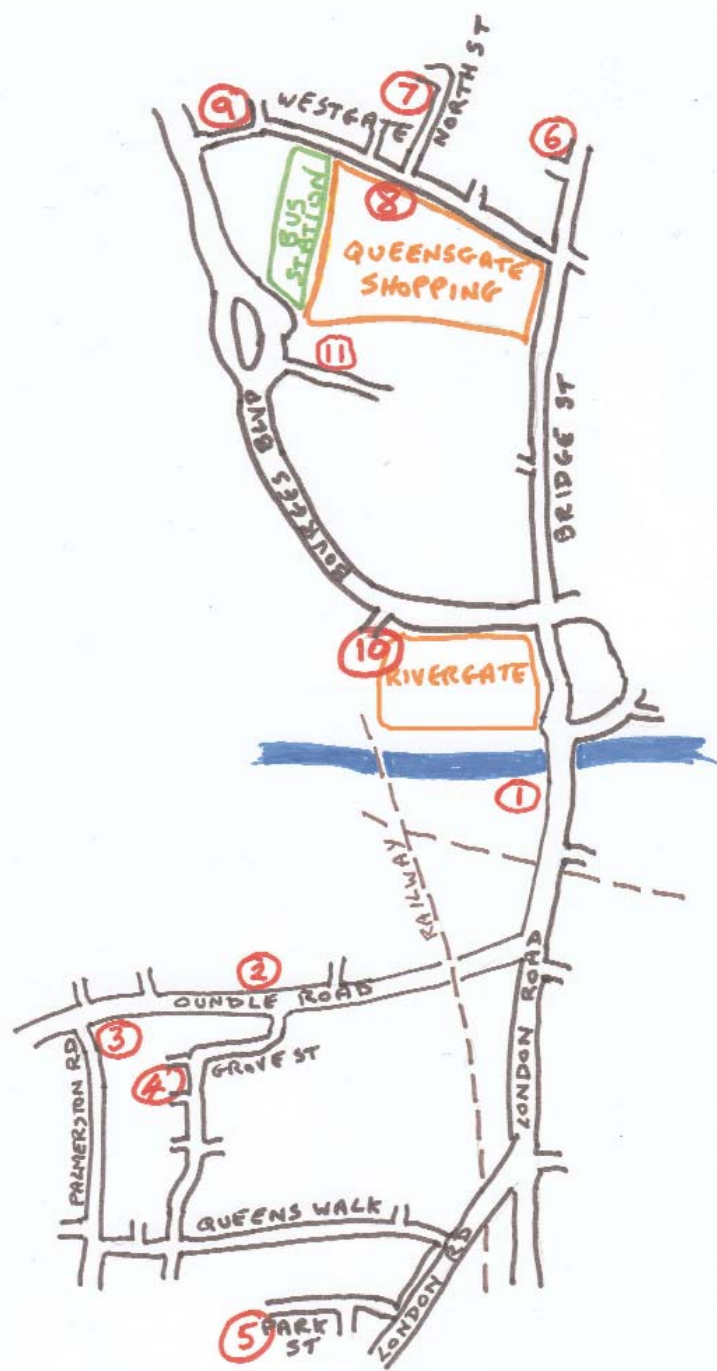


If you head down Grove Street, more or less opposite the Cherry Tree, and follow the road round you will come to the **Swiss Cottage (4)**, easily spotted as it looks like a Swiss cottage. A proper locals' pub with up to three beers often served directly from the cellar.



Head back up to Oundle Road and turn left. A couple of hundred yards will take you to the **Palmerston Arms (3)**. The Palmy is owned by Batemans and here you will find a range of micro-brewery beers alongside the XB, XXB, etc. The ground floor cellar is on full view through a large glass panel behind the bar.





From the Palmerston walk down Palmerston Road at the side of the pub and take the left turn into Queens Walk. At the end of the road turn right alongside the main road. Turn right again at the off-licence into Park Street and on the left you will see the **Coalheavers Arms (5)**. The Coalies is owned by Milton Brewery so expect to find half of the pumps on Milton beers and the rest on guests. This is another friendly locals' pub with an excellent beer garden. Turn right out of the pub and left at the main road and head back to the festival.

## Pubs in the city centre

This time turn away from Charters and towards the town centre. Cross the road at the closed Woollies store and keep going in a straight line until you see the **College Arms (6)** on your left. This is the original Wetherspoons in the city and will always have at least one beer from a local brewery.

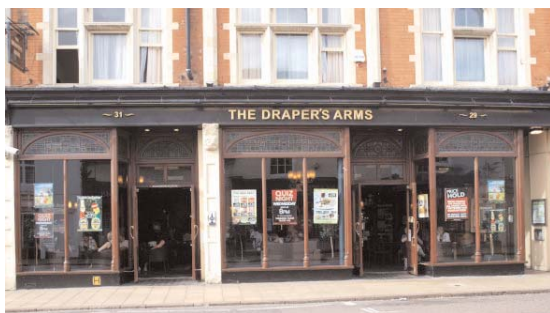


On leaving the College, go back on yourself and turn right at the bright yellow Snappy Snaps shop. Turn right into North Street just after the Westgate House store. At the end you will find the **Ostrich (7)**. This free house opened just before the beer festival last year and should have a good range of real ales, including local breweries, that vary regularly.

Retrace your steps to the end of the road and turn right. Just over the road is the **Wortley Almshouses (8)**, a Sam Smiths pub with the cheapest beer in town.



Continuing along the road you will see the **Brewery Tap (9)** ahead. This is the showcase for Oakham Ales and some of the one-off ales are brewed in the flash micro plant behind the glass panel. Normally you will find a range of about a dozen ales, both Oakham Ales and guests. Excellent, reasonably priced Thai food is available here. The Tap is still under threat of destruction to make way for a "much needed" car park.



Out of the Tap, head across the road and through the bus station, keeping to the left. At the other end, turn left when you see Robertsons shop and the **Drapers Arms (11)** is just in front of you on the left. The Drapers is the newer JDW establishment and always has a good range of real ales on tap, often from smaller micros. Traditional cider is also available here as is the usual very reasonably priced JDW food.

After the Drapers, cross the road and just to your right you will see the underpass to the railway station. Head down and under the road. Take the first exit on the left and then left again and you will be on Bourges Boulevard opposite the "Telegraph" offices. Turn right towards "Pets at Home", past Sharman Quinney and the newest pub in the city will be to your right. **The Beehive (10)** has been closed for some time but is now a free house. It has a smart steel bar and varied seating to provide areas for eating and quaffing. Four hand pumps and two house beers brewed by Castor Ales. Good food, homemade crisps and homemade pork scratchings.



Carry on along the road and you are back opposite the closed Woolies and close to home (the Beer Festival).



If you wait at the bus stops here you can catch a number one bus to the **Hand & Heart**. The 'Hand' is the only pub in Cambridgeshire on the CAMRA Regional Inventory because of its unspoilt interior. The place was rebuilt in the 1930's and remains more or less as it was then. Currently, our CAMRA newsletter editor is mine host and you can expect to find several ales on tap. Ask for Cambridge Avenue. Press the bell as soon as you see Highbury Street or the Emperor Chinese Restaurant on the right. Cross over the road and walk back to Highbury Street.

If you want to do some of the South pubs by bus, then you need to be at the stops outside Woolies. Get the 6 or 7 and ask for Park Street. The bus will bear right at the traffic lights just after the football ground on the left. Press the bell once past the lights. Or get the number 1 and ask for the Cherry Tree. The bus bears right at the traffic lights just after Charters. Watch for the stop just after you go under the railway bridge and press the bell once you have passed it. Alternatively ask for the Palmerston Arms and press the bell as soon as you pass it on the left.

**Wherever you go and whatever you drink  
have a good time and don't forget to return to the festival...**